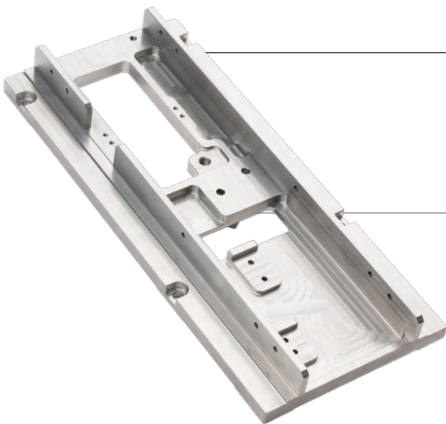


▲ MACHINING & TURNING TOLERANCES



INCHES [MM]

Angular	± 1 degree
General Linear dimension	± 0.005 [0.12]
General Hole diameters	± 0.003 [0.076]
General Turning diameter	± 0.003 [0.076]
Flatness	1" x 1" within .0005 [.013] 6" x 6" within 0.005 [0.12] 12" x 12" within .01 [.25]
Total Run-out	Up to 1" within 0.001 [.025] Up to 4" within 0.002 [0.051] Up to 6" within 0.005 [0.12]



PRISMIER

PRISMIER.COM